

INTERNATIONELLA ENGELSKA SKOLAN

Join our school



**REGISTER IN
THE QUEUE:**
engelska.se

Introduction

LEARNING AT AN IES SCHOOL

Thank you for your interest in Internationella Engelska Skolan. We look forward to welcoming your child to one of our schools.

To understand our culture, all you need to do is cross the threshold of an IES school. Principals who are there every morning welcoming students. Hats removed as a matter of course. Mobile phones put away without a word. Waste picked up almost before it hits the floor. All our passionate and committed principals, teachers and other professionals, doing their utmost every day for every student to be seen and get the support they need to reach their full potential.

IES is a truly international school - a school for families and teachers who desire a dynamic international environment, where English is a natural part of schooling and students and teachers from different cultures and countries learn and work together.

The school group was founded in 1993 and is today the fourth largest educational provider within compulsory school (grundskolan) in Sweden. The safe environment that our schools offer and the proven excellent academic results our students achieve have led to continuously growing waiting lists for our schools. As of 2022 approximately 32,000 students attend our 46 schools in Sweden.

We regularly hold open houses at many of our schools, to give prospective parents the chance to see how we work. We'd like to invite you to join us, to see what life is like at IES and what we can offer your child.

Internationella Engelska Skolan

WE PREPARE STUDENTS FOR THE WORLD

We are convinced that it is with our clarity and commitment to our ethos, coupled with ambitious and dedicated teachers that we create the foundation for a really good school. A school where everyone is working toward common goals. We know that structures and routines inside and outside of the classroom creates stability and security. Our students are the focus of all we do. Our aim is to assist them in their academic and social development to ensure they can confidently step into the adult world. Teachers and staff share our fundamental values and are driven to challenge each student to do their personal best. We are always working to develop our students' self esteem and sense of grit. As a student at IES, you will have abundant opportunities to grow, both academically and personally, while being enabled to reach your future dreams.

ANNA SÖRELIUS NORDENBORG
CEO, INTERNATIONELLA ENGELSKA SKOLAN



Three major convictions define life in our schools

WHAT WE STAND FOR

► Command of English

English is a global language and learning to command both the Swedish and English languages at an early age becomes hugely advantageous later in life. We believe fluency is best achieved through language immersion. Up to half of the education at Internationella Engelska Skolan is conducted in English.

► High academic expectations and aspirations

We are convinced that every child can achieve success irrespective of their background. This means that we challenge every student to reach their full potential. We are dedicated to supporting students of every background to become responsible citizens and acquire the self-confidence and ambition to do the most with their talents.

► A safe and calm school environment

We set clear structures and expectations as this helps students feel secure. This in turn is essential to a good learning environment and signals respect for the value of education. By showing respect for each other and ourselves we lay the foundations for safe and stimulating schooling, while we care for our students in our efforts to prepare them for success as adults.

An IES education

WHAT YOU CAN EXPECT FROM IES

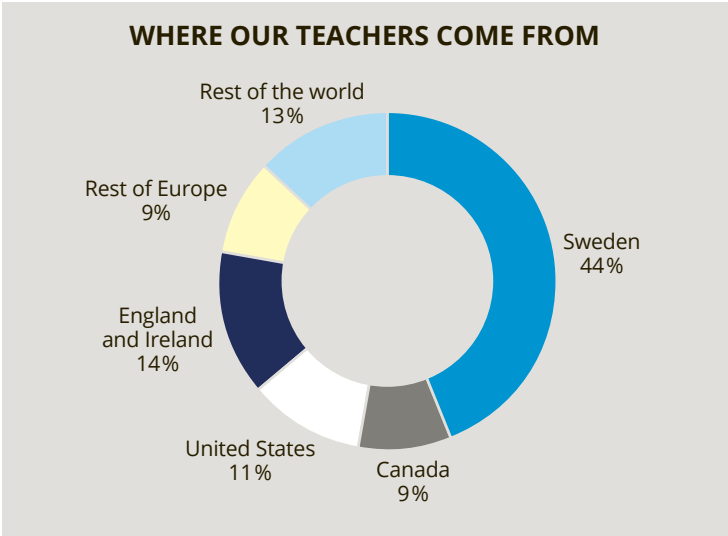
School is one of the most important parts of every student’s life. It plays a vital role in your child realising their hopes and dreams, and in shaping who they become as a person.

We believe that by setting high academic expectations for all children and having clear rules and routines, we make sure they can all succeed, irrespective of background. Our teaching is grounded in the Anglo-Saxon tradition of knowledge, which means we have a traditional view of the school as a provider of knowledge and the teacher as an authority.

We recruit passionate teachers to deliver well-planned lessons designed for the whole class.

At the same time we recognise that each child is unique, so our teachers take account of their strengths, needs, and distinct personality to differentiate when needed. We’ll see when your child needs extra help or when they need an extra challenge, and we’ll make sure that they get both types of support.

As parents we’ll ask you to be actively involved in school life, working with us to help your child reach their full potential, in terms of both academic and personal growth.



Command the English language

WHY A BILINGUAL EDUCATION?

Confidence in an international environment, understanding of the world, the ability to think in new ways. The benefits of a bilingual school are many.

We are a Swedish school and we safeguard the Swedish language. Swedish is vital to your child in terms of being a part of this culture, integrating into Swedish society and enjoying everything that this country has to offer. English, on the other hand, is a language of the world. The labour market of today is global, in the academic world, including in Sweden, some elements of the education are often conducted in English. More and more sectors use English as their working language. With a bilingual education we equip students for the future.

While our focus is on Swedish and English, a blend of many languages and cultures becomes a way of life for our students, who learn in a truly international atmosphere and meet the world at school every day. They have classmates and teachers who represent many cultures. This promotes global understanding, so that your child will also learn to understand different cultural perspectives, from “lagom” to the “American dream”, and everything in between.

FROM ONE TO TWO LANGUAGES

When your child first steps into our school, he or she might only speak one language. We kick-start the education of the youngest children by making sure to get their English up-to-speed as quickly as possible. After a few short months most students will start to feel confident in English and Swedish. We speak English at school and use both Swedish and English teaching materials.

LANGUAGE IMMERSION

Up to half of the education at Internationella Engelska Skolan is delivered through the English language, by qualified teachers from English-speaking countries including Australia, Canada, South Africa, the USA, and the UK. This language immersion helps our students to become truly bilingual, commanding both languages fully.



An example of a school day at IES

MAKING THE MOST OF EACH DAY

Students thrive when they know what to expect. A well-structured school day helps your child feel confident and contributes to a good learning environment.

08 00

MEET AND GREET

Being greeted each morning by the principal is a small act which speaks volumes to each child; they know they have been seen and that they matter. IES students say goodbye to their mobile phones at the same time as their outdoor clothing. Devices are switched off and locked away so everyone can focus on learning in lessons, and real conversations with their friends during free time.

For our youngest students the day begins with fritids, which is open from the early morning based on parents' work schedules.

08 20

WELL-STRUCTURED LEARNING

Each lesson starts on time and is used fully. Students line up quietly before being welcomed by their teacher; this simple routine helps everyone focus from the first minute.

Lessons are characterised by structured, teacher-led delivery. Students receive regular feedback and know what is expected of them thanks to clear learning objectives and success criteria.

Scheduled time with their mentor lets each student discuss their progress and the learning environment. Mentors also make regular phone calls to guardians, so we can work together to promote learning and growth.

12 00

DURING BREAKS

Breaks give everyone the chance to unwind with their friends, using play and sports equipment or socialising in a student lounge. Students eat lunch by class, with staff, and enjoy a healthy and nutritious choice of meat, fish or vegetarian dishes.

15 00

AFTER SCHOOL

After school, younger students may attend fritids or junior club.

We also have teacher-led academic surgeries open to all students. This is a place where students can complete their homework, get extra help, or ask for a challenge, so they learn at a pace which suits them.



An academic atmosphere

FULL FOCUS ON LEARNING

Knowledge is at the heart of everything we do. The whole team at the school, including teachers, school leaders, and support staff is there to help your child learn. Our firm belief is that the starting point for all learning is to establish a safe and calm environment.

A SAFE AND CALM ENVIRONMENT

To be able to take in knowledge, students need a safe, calm and stimulating school environment where they enjoy being, have friends and trust adults. School is our children's working environment. Together we create an atmosphere where your child can concentrate and be ready to learn, and where teachers can focus on delivering engaging lessons.

Together students and staff are responsible for creating a pleasant school environment, through simple acts like behaving in a respectful way to everyone.

Students, parents and staff who join IES sign an agreement to uphold a common set of values, which clearly states that we will all work together to ensure that our schools remain welcoming spaces, free of vandalism, bullying and noise.

A WHOLE TEAM TO SUPPORT AND CHALLENGE

We work equally hard with what happens during lessons and what happens outside the classroom. We have a team of well-educated teachers and specialists in each school to help and challenge your child. Our teachers are supported by academic managers, heads of department, heads of year, the student care team and other specialists, who provide extra assistance, over and above what is normally found in Swedish schools, to meet the emotional and academic needs of students.

All students have a mentor with a special duty to support them. The mentor is the main contact between you as a parent and the school. We provide formal feedback four times a year, while mentors maintain regular contact with parents throughout the school year. This level of contact is important as your family also has a key role in helping your child succeed.

Academic quality

HELPING YOUR CHILD REACH THEIR FULL POTENTIAL

We have a high expectation of every student's ability and desire to learn, an important starting point to achieve results. Setting high academic expectations for all students is essential. All children should be inspired to do their best and be challenged to do even better.

Any child can succeed with excellent teachers who inspire the class. We hand-pick teachers with the strongest qualifications and dedication to education to ensure the best learning experience. Our staff will help your child to set their own ambitious expectations, and then meet or exceed them.

We set challenging homework which promotes learning outside the classroom and hold regular tests so every student can see how they are performing and what they need to focus on.

STRONG ACADEMIC PERFORMANCE

We have a long track record of helping our students achieve high academic results and we aim to always maintain the highest quality in teaching. Grades, including national tests and final grades, are rigorously checked so they give an accurate picture of each student's and each school's achievements. We also share best practice between our 46 schools to continuously improve the quality of our education.

INTERNATIONALLY RECOGNISED TESTS

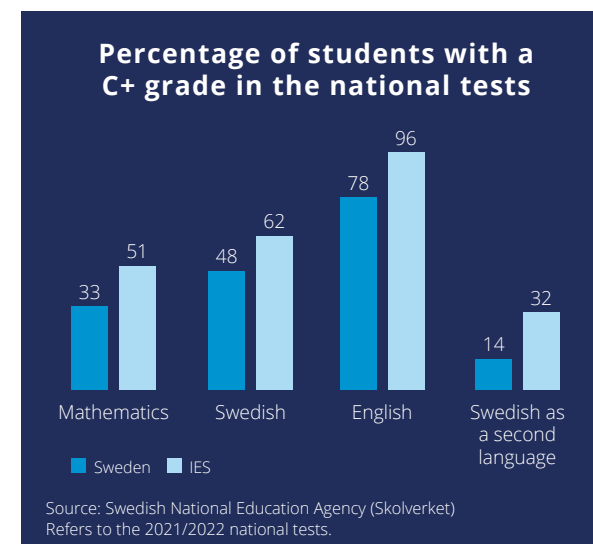
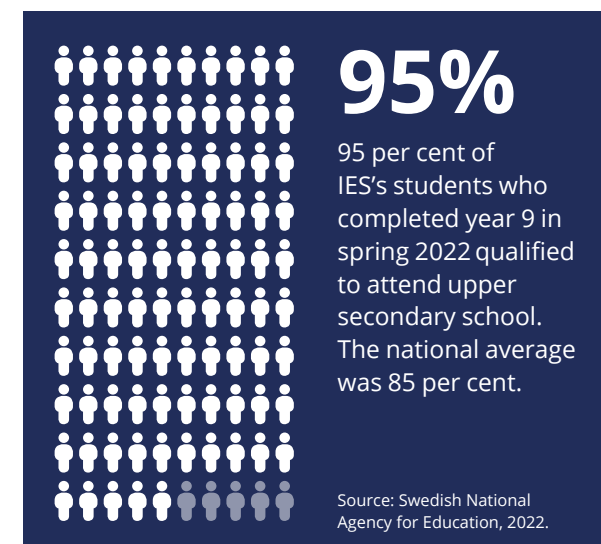
IES students can choose to take extra examinations, IGCSEs (International General Certificate of Secondary Education) from Cambridge Assessment International Education. These exams are valued throughout the world and based on learning materials from Cambridge, which provide goals over and above the Swedish system.



**Cambridge Assessment
International Education**

Cambridge Associate

Internationella Engelska Skolan is a registered associate of Cambridge Assessment International Education.



What families say

A SUPPORTIVE SCHOOL IS VITAL

Choosing the right school for your child can be difficult, but it can also make all the difference in the world. For the Johansson Kalström family in Stockholm, finding a school that believed in their son Levi was vital.

Pernilla Johansson and Carola Kalström were looking for something completely different than before, when their son Levi started grade four at IES Länna. "The teachers and staff have changed our lives completely", Carola explains. "Levi enjoys going to school now, he is happy. Everyone is devoted and they genuinely want every child to feel confident and to be able to reach their full potential. The teachers listen to the kids and believe in their abilities."

School hadn't always been a positive experience. "Levi had a turbulent time right from the start in F-class and he changed schools several times during his first school years", Pernilla says. "It seemed impossible to find teachers or a school that understood and supported him and focus was directed to what was not working, instead of the opposite. All the negativity was taking a toll and Levi was really struggling."

Also, Levi is a fast learner, and his parents wanted him to be challenged academically.

"His previous schools either didn't have resources or the ability to cater to his knowledge hunger and he was constantly understimulated", Carola says. "The biggest difference between IES and other schools is that IES has a clear structure, the students know what is expected of them. It's a high level of education, but it's adapted to each individual. Levi likes to get challenging tasks and they make him feel like he dares to try – they support him all the way. The teachers know how to motivate students to work hard, and they focus on the progress. The positive feedback becomes a driving force for the children, they feel that it's possible to succeed."

Pernilla and Carola feel confident about Levi's future, as he is allowed to be himself in school, to be seen and to thrive.

"They guide him through difficult situations and give him tools to succeed. He feels equally important as anybody else – inside and outside of the classroom. We are so grateful that we came to IES Länna", Carola concludes.

Our schools

FROM SKELLEFTEÅ IN THE NORTH TO TRELLEBORG IN THE SOUTH



Middle Schools

1. Borås
2. Bromma
3. Enskede
4. Eskilstuna
5. Falun
6. Gävle
7. Halmstad
8. Helsingborg
9. Huddinge
10. Hässelby Strand
11. Häsleholm
12. Johanneberg (Gothenburg)

13. Järfälla
14. Jönköping
15. Karlstad
16. Kista
17. Krokslätt (Gothenburg)
18. Kungsbacka
19. Landskrona
20. Liljeholmen
21. Linköping
22. Lund
23. Länna
24. Nacka
25. Sigtuna

26. Skellefteå
27. Skärholmen
28. Solna
29. Staffanstorps
30. Sundbyberg
31. Sundsvall
32. Södertälje
33. Trelleborg
34. Tyresö
35. Täby
36. Umeå
37. Upplands Väsby
38. Uppsala

39. Värmdö
40. Västerås
41. Växjö
42. Älvsjö
43. Årsta
44. Örebro
45. Östersund

Upper Secondary

46. Södermalm

"At IES, every student is given the possibility to reach their full potential, regardless of who they are."

LINNÉA, IES KARLSTAD



How to apply

JOIN OUR SCHOOL

Choosing a school for your child is one of the most important decisions you will make as a parent. It will have a profound effect on their future life.

ABOUT SCHOOL CHOICE

All parents have the right to make an active choice about where their child should learn, whether they are applying to a municipal or a free school.

Popular schools, with more applications than places, use different methods to decide which children will be offered a place. While municipal schools tend to offer places to those who live closest, many free schools use a first-come, first-served system. In this system those who have the earliest queue date are most likely to be offered a place. IES uses this queue-based system while giving priority to siblings.

APPLY IN JUST THREE STEPS

- 1 Visit our website at **engelska.se** and click *Join The Queue*.
- 2 Choose the school you want to apply for. Every school has its own queue and you can place your child in the queue from 1 February the year after they were born.
- 3 Fill in the form and we will contact you when the admissions process starts.



Learn more: www.engelska.se

Follow us: facebook.com/Engelska.se

If you have questions, please contact info@engelska.se
Thank you for considering us!